

# Spirit / Boeing Today

Volume 37, Issue 5

Web Address: <http://www.beatoday.com> or [www.spirit.beatoday.com](http://www.spirit.beatoday.com)

May 2022

## Contents

Calendar of Events  
Kids Fishing  
Rock River Rapids Day  
Member Perks ...Inside Page

Lake\Store Hours & News  
Ticket Information  
Creels, Lake News  
Store Sales.....Back Page

## Spirit/Boeing Employees' Association

4226 S. Gold Wichita, KS 67217  
(316)522-2996, Fax (316)522-2401  
MC K30-35 – Plant Mail

## SBEA Management Staff

Trish Pulliam, Executive Director  
Stephanie Jenkins, Act. Dir./Editor  
Lisa Dunbar, Store Manager  
Jane Sparks, Bookkeeper  
Pat Lewis, Lake Store Supervisor

## Member Information

Missy Rosson, 522-2996  
Main Store, Plant II, 526-2111  
Lake Store, 522-5966

## SBEA Board of Directors

Board Meeting Attendance

IA EA UA EO LI

D. Burrow Pres.	4
L. VanDever, V. Pres.	4
C. McCoy, Sec.	3 1
D. Horstman, Tres. M.	3 1
M. Agnew	4
P. Brown	3 1
S. Roush	4
Open Position	

IA/In attendance, EA/excused absence, UA/un-excused, absence EO/early out, & LI/late in

## LUNKER CATFISH TOURNAMENT

May 21 & 22

**Only those entered in tournament will be allowed to fish. This is a fundraiser for SBEA.**

Your chance to catch the "BIG" one and take 1st place has just gotten better. Grab your fishing poles and don't worry about bait, our lake store can accommodate all your needs for this tournament. Once the fish for this tournament have been stocked in the lake there will be not fishing until the tournament starts at 8 a.m. on May 21. **Only those that have paid to enter the tournament will be allowed to fish until the tournament is over.** This is a 24-hour tournament; registration starts at 7 a.m. on May 21 and the tournament starts at 8 a.m. May 22 weigh in time is at 8 a.m. sharp; however, you may weigh in anytime during the tournament if you do not want to stay the whole time. You may pre-register at the lake store before May 21 or the day of the event. The lake will be stocked with "BIG" channel cat for this tournament. There will be 3 cash prizes for the three largest creel of 4 catfish; 1st place, (\$250), 2nd place (\$150) and 3rd place (\$100) and then \$100 if you want to enter the contest for largest catfish caught for an additional \$5.00 entry fee. All rules of the lake must be followed with no gold fish allowed for bait and 2 poles per fisherman. No buddy system will be allowed, you must catch your own fish and they must be kept on your own stringer or in your own basket and kept in the water. Vehicles will be subject to inspection. Contestants will be supplied with an armband and rods used in the tournament will be tagged. Tournament ends promptly at 8 a.m. on May 22. If you do not present your fish by that time, you will be disqualified, so be sure to be on time. For your convenience the bait shop will be open until midnight on May 21. **The lake will be closed** for fishing to everyone who is not a contestant in the tournament. Camping will be allowed for those in the tournament on May 21.

## BOOK FAIR

**SBEA MAIN STORE**

**May 19, 7:00 a.m. - 3:00 p.m.**

Stop by the cafeteria in plant II and check out the books, toys and gifts that have been brought in just for our members. The very best products available in the convenience of your workplace, at a huge retail discount. Cash, debit cards, credit cards are accepted. Payroll deductions can be done during SBEA store hours.



# Calendar of Events

## KID'S FISHING DAY



**Fun For Kids  
And A Chance To Win Prizes  
June 4, 9:00 a.m. - 12:00 p.m.**

Bring the kids and come out and enjoy the lake and the thrill of catching a fish. We will stock the kid's pond with fish especially for this day. Prizes will be given away that day for the kids. Free hotdog, chips and pop will be provided for participating kids. Concessions will also be available. This is a chance to see what a great facility you have at SBEA. The SBEA lake is located at 4226 S. Gold. Members can save 10% off all kids fishing items after the fishing event. This is a great time to check out our tangle free kid's fishing rods. Meet in front of the lake store at 9:00 a.m. or come out anytime from 9:00 a.m. - 12:00 p.m.

## 4TH OF JULY CELEBRATION

### Come Celebrate with Us

Join us on July 4th, 2:00 pm - 10:00 p.m. for 4 hours of fun and activities for the whole family to enjoy. What a great way to celebrate the 4th at SBEA with fishing, bingo, Troubles the Clown, Face Painting, ice cream social, fireworks & more. There will be tagged fish that are worth cash. Tagged fish will only be honored during the fishing contest hours: 8 a.m. - 6:00 p.m. Then sit back and enjoy the fireworks. This event is still being finalized; more event details to come. Keep an eye open for new information both on our Facebook page and on our web page, [SBEA Events - Spirit / Boeing Employees' Association \(beatoday.com\)](http://SBEA Events - Spirit / Boeing Employees' Association (beatoday.com)). We can't wait to see you all.

Sunday night camping will be open Sunday July 3 for your enjoyment.

Due to limited staff, we are in need of some volunteers who could assist us in several areas. The following areas are, but not limited to; Monday July 4th, inflatables/bouncy houses, midway games, bingo and games in the afternoon for a couple of hours. Please contact Stephanie at 522-2996 or [steph@beatoday.com](mailto:steph@beatoday.com) if you would like to help out.



## DAY AT THE WATER PARK

**SBEA Day At Rock River Rapids  
August 6**

Join SBEA in a day splashing, soaking, sliding and sunning yourself as you enjoy the lazy river, lap pool, zero-depth pool at Rock River Rapids. Tickets will be sold in advance in all SBEA stores and will only be good for SBEA Rock River Rapids Aug. 6, 2022 only. Pay \$4.50 for adult and \$4.00 for seniors & youth (3-17), children under the age of 8 must be accompanied by an adult age 16 or older to enter facility. Tickets on sale in all SBEA stores, Rock River Rapids is open 12:30 p.m. - 7:00 p.m. Regular prices are \$9.00 for adult.



## DESIGNER BAG BINGO

Get ready to join us for our 1<sup>st</sup> ever Designer Purse Bingo event. Friday, July 15<sup>th</sup>, 6:30 p.m. - 8:30 p.m. Enjoy a fabulous night for a chance to win name-brand designer purses with 10 games of bingo. Tickets are \$20.00 in advance and \$25 at the door, which include admission, appetizers, and 20 game cards (2 per game). Buy your tickets in advance and be entered into a raffle to be given away at the end of the night. You may purchase 2 additional Bingo cards for each game upon arrival to the SBEA Designer Purse Bingo for, \$3.00 per card, limit of 2 cards per game per member. Doors will open at 6:00 p.m. and games will begin at 6:30 p.m. Watch the June Newsletter for more information.

- One winner per game
- Bring your own adult beverages, if you would like!
- Must be 12 years old and older to play. Every person, regardless of age, must purchase the \$20/\$25 ticket to enter.
- Infants and young children are not allowed.
- 50/50 cash pot will be available during the games and winner selected at the end.
- Michael Kors, Kate Spade, Coach and other Brands

## UPCOMING EVENTS

**Lunker Catfish Tournament** - Aug. 26 & 27. Entry fee is \$25.00 and \$5.00 if you want to enter for the largest Catfish caught.

**Sporting Clay Shoot** - Oct. 22, 10:00 a.m. - 11:00 p.m. Shady Creek Sporting Clays Range, 1252 N Oliver, Belle Plaine, KS. Watch for further details @ [www.beatoday.com](http://www.beatoday.com)

**Craft Show** - Nov. 5, from 9:00 a.m. - 3:00 p.m., Kansas Extension Center. Free to shop, \$40.00 a booth for members, \$50.00 a booth for non-members.

**Christmas Extravaganza Sale** - Save the date, Nov. 19 & 20, 2-day sale. SBEA Lake enclosed pavilion, 4226 S Gold.

## RIVERFEST BUTTONS

### Yes We Have Wichita Riverfest Buttons!

Riverfest is June 3– 11, the buttons are \$10.00 members, \$15.00 non - members, kid's \$5.00 members and \$10.00 non - members. See SBEA stores for availability. Buttons are available while supplies last.



## NEW MERCHANTS

**RiverSport Adventures**, 800 Riversport Dr., Oklahoma City, OK is offering SBEA members 35% off daily passes. Daily passes can be purchased at any SBEA store. Riversport Day Pass \$35.99 (reg. 54.99), Adventure Day Pass \$25.99 (reg. \$39.99).

**Worlds of Fun & Oceans of Fun**, 4545 Worlds of Fun Ave, Kansas City, MO is offering SBEA members \$2.00 off passes. Daily passes can be purchased at online, please stop in any SBEA store for direct link for discount. Tickets are \$38.00 (reg. \$39.99). Ages 3 and older.

**Miller Dry Cleaning**, 2002 W. 2nd, Wichita, 316-942-5180 is offering SBEA members 20% off dry cleaning services. Members must show SBEA membership card at the time of services.

**Blade & Timber Axe Throwing**, 535 W. Douglas Ave., Ste 160, Wichita, 316-213-3961 is offering SBEA members 10% discount off for one lane use only, and offers cannot be combined with other discounts. Please check with store clerk or call 522-2996 for code or direct link with the discount already applied. Members must show SBEA membership at time for discount.

**Field Station: Dinosaurs**, 2999 N. Rock Rd Derby, 1-855-833-3466 is offering members 20% off up to 6 Day Passes during regular operating hours. SBEA members must show their membership card at time of purchase to receive discount.

**Little Caesars**, 1444 N. Maize Rd Ste 100, Wichita, 316-558-3535, 320 N. Rock Rd Ste 100, Derby, 316-788-5566, 601 N. West St Ste 208, Wichita, 316-558-343, 1353 S. Webb Rd, Wichita, 316-425-977, is offering SBEA members 10% off their order. Members must show SBEA membership at time for discount.

**Wing Stop**, 7325 W. Taft St Ste 106, Wichita, 316-773-4300 is offering SBEA members 10% off order. Members must show SBEA membership at time for discount.

## ARE YOU READY?

### Camping Season is Just Around The Corner May 27 - September 5

Camping season is just about here and that means camping by the fire. The lake store will have fire pits available during May 27– September 5. There are several requirements. No fires will be allowed until you check with the ranger for full details. SBEA has fire pits available for rent in the lake store as well as firewood. You cannot set up a fire pit unless approved by the rangers. Cost per day will be \$20.00 deposit, \$5.00 rental with your own firewood or free rental if you purchase firewood from SBEA. Please check in with the lake store for a list of fire pit rules and application to sign. Absolutely no fire pits will be accepted on the docks or picnic areas at any time.



## STORE NEWS

### MAY NEWS

#### On Sale

**20% Off**

All essential oils

**30% off**

Women's clothing

We are overflowing with marked down/clearance items so; take advantage of our Spring-cleaning pricing at all SBEA stores to help make room for new merchandise. Our loss is your gain, it is a win-win situation!

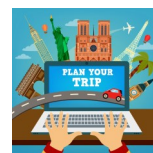
**Mother's Day:** May 8 is Mothers Day, SBEA stores will be taking flower orders for that special person in your life from Perfect Petals for delivery. The stores also have special gifts for mom, so be sure to shop early for the best selections.

**Holiday & Special Occasions:** May can be a busy month full of graduations, birthdays, Mother's Day and Memorial Day. SBEA stores will be happy to assist you with gifts for any of these occasions. Don't forget we also sell gift cards and gift certificates.

## PLANNING A TRIP!

School's just about out and workloads are lighter for some, making summer a prime season for family travel. A vacation can give you that much needed time to catch up in person! Check with SBEA for all your traveling needs with lodging, entertainment and dining out. Simply stop in your nearest SBEA store for information and member codes to the following and be sure to check out our merchant discount list for all your traveling needs.

- Ticketsatwork
- Perks Connect
- Great Wolf Lodge
- V. J.'s Exotic Safaris
- Silver Dollar City
- More



## SBEA LAKE NEWS

### Summer Hours: May 4

#### Store Hours:

Wed.- Sun. 7:00 a.m. - 9:30 p.m.

#### Lake Hours:

Wed.- Sun. 7:00 a.m. - 10:00 p.m.

Lake & Store are both closed on Monday & Tuesday year round except for some holidays.

### Overnight Camping: May 27

Lake Hours are open Fri. 7:00 a.m. until Sun. 10:00 p.m.

### Memorial Day Lake Hours:

The lake will open on May 27 at 7:00 a.m. and stay open until 10:00 p.m. on Monday May 30.

## Last Months Creel

### April



Catfish 41, Trout 41,  
Crappie 16, Bluegill 21  
Carp 8, Total 100

## TROUT TOURNAMENT

### MAY 28

7:00 a.m. - 5:00 p.m.

The largest trout caught wins a High Tech jumbo fishing basket. You must be a member and register your catch with the ranger. These fish must be legal size and alive.

**Inventory red tag sale:** Check out the red tag sale going on at the lake store.



### BOAT RENTALS

We have Jon boats available to rent. The boat rental and our members safety is a big concern to us. Please view all the rules and regulations on boat rentals at our website <https://beatoday.com/lake/rules-and-regulations/#boating-rules>.

### BOATS

12' to 14' fishing boats available for rent. \$2.00 per person/per hour.

### PADDLE BOATS

\$1.00 per person/per 30 minutes. .50¢ per person for the next 1/2 hour.

**Notice: Please fill out this form to make sure we have your current information to guarantee your membership cards reaches you at your company mail code. Please send in home address changes to SBEA at K 30-35.**

Please help us keep our files current. If your home address has changed, please return this form to SBEA, K30-35. We do not get advised of home address changes or work mail code changes.

Name \_\_\_\_\_ Employee ID \_\_\_\_\_

Address \_\_\_\_\_ City/St/Zip \_\_\_\_\_

Phone (w) \_\_\_\_\_ (h) \_\_\_\_\_ Email \_\_\_\_\_

M/S \_\_\_\_\_ Org. \_\_\_\_\_ Work for Spirit \_\_\_\_\_ Boeing \_\_\_\_\_

## TICKETS (526-2111)

Concerts and shows are subject to change or cancel at any time without notice.

### Intrust Bank Arena Events

#### Paw Patrol Live!

May 17 & 18, 6:00 p.m.  
Order tickets by May 10, 1:00 p.m.  
Tickets \$15.50 - \$115.50

#### Brooks & Dunn

May 20, 7:00 p.m.  
Order tickets by May 11, 1:00 p.m.  
Tickets \$30.25 - \$110.25

#### James Taylor

July 16, 8:00 p.m.  
Order tickets by July 5, 1:00 p.m.  
Tickets \$64.00 - \$124.00

#### Dirks Bentley

Aug. 6, 7:00 p.m.  
Order tickets by July 20, 1:00 p.m.  
Tickets \$35.25 - \$110.25

#### Back Street Boys

Sept. 13, 7:30 p.m.  
Order tickets by Sept. 7, 1:00 p.m.  
Tickets \$79.00 - \$304.00

#### Keith Urban

Sept. 17, 7:00 p.m.  
Order tickets by Aug. 31, 1:00 p.m.  
Tickets \$30.00 - \$140.00

### Hartman Arena Events

#### Justin Moore

May 19, 7:30 p.m.  
Tickets \$30.00 - \$60.00

#### ZZ Top

June 24, 7:00 p.m.  
Tickets \$69.50 - \$149.50

#### The Avett Brothers

July 1, 8:00 p.m.  
Tickets \$55.50 - \$99.50

## TICKETS (526-2111)

### Cotillion Events

#### Clutch

May 13, 8:00 p.m., tickets \$35.25

#### World Class Presents:

##### We Got Tis

May 15, 6:00 p.m., tickets \$10.25, \$20.25

##### Tracy Lawrence + Clay Walker

May 28, 8:00 p.m.  
Tickets \$45.25 - \$125.25

##### Steve Earle and The Dukes

May 28, 8:00 p.m., tickets \$29.75, \$35.25

##### Tech N9ne's: AsiN9ne Tour 2022

June 10, 8:00 p.m., tickets \$37.25

##### Creed Fisher

June 24, 8:00 p.m., tickets \$17.25, \$22.25

##### Tab Benoit

July 1, 7:00 p.m., tickets \$25.25, \$30.25

##### Aaron Lewis and the Stateliners

July 16, 8:00 p.m., tickets \$49.75, \$59.75

##### Pop Evil

Aug. 14, 7:00 p.m., tickets \$17.25, \$20.25

##### Weird Al™ Yankovic

Sept. 1, 8:00 p.m., tickets \$35.25 - \$329.25

### Kansas Star Events

#### Ricky Skaggs

June 18, 8:00 p.m.  
Tickets \$28.50 - \$53.50

#### Big & Rich

July 15, 7:30 p.m.  
Tickets \$43.50 - \$83.50

#### Ted Nugent

Aug. 5, 7:30 p.m.,  
Tickets \$33.50 - \$68.50

#### The Oak Ridge Boys

Sept. 23, 8:00 p.m.  
Tickets \$28.50 - \$58.50