

Spirit / Boeing Today

Volume 39, Issue 2

Web Address: <http://www.beatoday.com> or www.spirit.beatoday.com

March 2024

Contents

Calendar of Events
Family Bingo Day
Lunker Catfish Tournament
Member Perks ...Inside Page

Lake\Store Hours & News
Ticket Information
Creels, Lake News
Store Sales.....Back Page

Spirit/Boeing Employees' Association

4226 S. Gold Wichita, KS 67217
(316)522-2996, Fax (316)522-2401
MC K30-35 – Plant Mail

SBEA Management Staff

Trish Pulliam, Executive Director
Stephanie Jenkins, Act. Dir./Editor
Lisa Dunbar, Store Manager
Jane Sparks, Bookkeeper
Pat Lewis, Lake Store Supervisor

Member Information

Missy Rosson, 522-2996
Main Store, Plant II, 526-2111
Lake Store, 522-5966

SBEA Board of Directors

Board Meeting Attendance

IA EA UA EO LI

D. Burrow Pres.	2
C. McCoy, V. Pres.	2
L. VanDever, Sec.	2
R. Wilson, Tres.	1 1
M. Agnew	2
P. Brown	2
D. Horstman	2
S. Roush	1 1

IA/In attendance, EA/excused absence, UA/un-excused, absence EO/early out, & LI/late in

Look Who's Hopping Into Town

SBEA Annual Easter Celebration

March 30, 11:00 a.m. - 2:30 p.m.

SBEA Recreation Area, 4226 S. Gold

11:00 a.m. - 2:00 p.m. Games
11:00 a.m. - 2:00 p.m. Pictures w/ Easter Bunny
11:00 a.m. - 2:00 p.m. Troubles The Clown
11:00 a.m. - 2:00 p.m. Face Painting
11:00 a.m. - 2:00 p.m. Character Artist
11:00 a.m. - 2:00 p.m. 24' Obstacle Course
11:00 a.m. - 2:00 p.m. Decorate Cookies
11:00 a.m. - 2:00 p.m. Midway Games
11:00 a.m. - 2:00 p.m. Crafts
11:00 a.m. - 2:00 p.m. Animal Rescue
11:00 a.m. - 2:00 p.m. Mickey Park Moonbounce
11:00 a.m. - 2:00 p.m. 10' Slide
11:00 a.m. - 2:00 p.m. Mickey Park Learning Club
11:00 a.m. - 2:00 p.m. Tic Tac Toe/ Four Across
11:00 a.m. - 2:00 p.m. Kid's Zone
11:00 a.m. - 2:00 p.m. Concession Stand
2:15 p.m. - Candy run with Prizes (Ages 2-4, 5-7, 8-10, 11-12)



Membership
cards checked
at gate

Plan on spending March 30 at the SBEA Recreation Area for lots of fun events, Troubles the Clown, crafts, Easter Bunny and more. Photos with the Easter Bunny will be available for \$3.00 or \$1.00 with your camera. The candy run will take place at 2:15 p.m. Some of the candy will be marked for special prizes. We will have concessions available to purchase food and drinks.

We NEED volunteers to help make this a fun and safe event for the kids. Please contact Stephanie at 522-2996 to join in the fun.

VOLUNTEERS WANTED

SBEA's Annual Easter Celebration is one of our members favorite activities every year. Activities include: games, crafts, jelly bean guess, lollipop tree, inflatables, face painting, decorate your own cookie, spin-art, pucker powder, concession stand and more. In order for this event (and other events throughout the year) to run smoothly, we rely on volunteers to help us make this happen. Did you know that volunteering and helping others can help you reduce stress, combat depression, keep you mentally stimulated, and provide a sense of purpose? Help us make this a fun and safe event for the kids by volunteering. Please contact Stephanie at 522-2996. Instant recognition given the day you volunteer.



Calendar of Events

FAMILY BINGO DAY

Come Join in The Fun
April 20, 1:00 p.m. – 4:00 p.m.
4226 S. Gold, St, Enclosed Pavilion



Hey kids, join SBEA for a fun and friendly afternoon of Bingo. A great way to spend a fun afternoon playing bingo and have a chance to be one of the lucky winners of fun prizes for kids and adults. Seating is limited to 100, so please get your tickets early to guarantee a space. Tickets are \$2.00 each and limited to 10 a family. Tickets available at all SBEA stores. Everyone attending must have a ticket to get in and present tickets at the door.

Ticket includes a hot dog (s), bag of chips and a drink. Feel free to bring any snacks or soda for your family! Please no alcohol as this is a kid friendly event.

Doors will open at 12:30 p.m. and games will begin at 1:00 p.m. So, don't miss out on this fun-filled event!

****All children must be accompanied by an adult****

LUNKER CATFISH TOURNAMENT

May 18 & 19

Only those entered in tournament will be allowed to fish. This is a fund raiser for SBEA.



Your chance to catch the "BIG" one and take 1st place has just gotten better. Grab your fishing poles and don't worry about bait, our lake store can accommodate all your needs for this tournament. Once the fish for this tournament have been stocked in the lake there will be no fishing until the tournament starts at 8 a.m. on May 18. **Only those that have paid to enter the tournament will be allowed to fish until the tournament is over.** This is a 24-hour tournament; registration starts at 7 a.m. on May 18 and the tournament starts at 8 a.m. May 19 weigh in time is at 8 a.m. sharp; however, you may weigh in anytime during the tournament if you do not want to stay the whole time. You may pre-register at the lake store before May 18 or the day of the event. **Pre-register by May 16 to be entered in a drawing for a Zebco 606 Spin Cast rod & reel combo.** The lake will be stocked with "BIG" channel cat for this tournament. There will be 3 cash prizes for the three largest creel of 4 catfish; 1st place, (\$250), 2nd place (\$150) and 3rd place (\$100) and then \$100 if you want to enter the contest for largest catfish caught for an additional \$5.00 entry fee. All rules of the lake must be followed with no gold fish allowed for bait and 2 poles per fisherman. No buddy system will be allowed, you must catch your own fish and they must be kept on your own stringer or in your own basket and kept in the water. Vehicles will be subject to inspection. Contestants will be supplied with an armband and rods used in the tournament will be tagged. Tournament ends promptly at 8 a.m. on May 19. If you do not present your fish by that time, you will be disqualified, so be sure to be on time. For your convenience the bait shop will be open until 10 p.m. and will have hot dog meals for sale on May 18. **The lake will be closed** for fishing to everyone who is not a contestant in the tournament, but members can still come out to the lake store. Camping will be allowed for those in the tournament on May 18.

CHECK US OUT

CATCH US ON FACEBOOK

Facebook is a great place where all our members can go for the latest up to date information on upcoming events, news, and more. Be sure to "like" us today! Spirit Boeing Employees' Association.

MEMBERSHIP CARDS

DO YOU HAVE YOUR 2024 MEMBERSHIP CARD YET?



The 2024 membership cards are at the main store in plant II for you to pick up. Members can request to pick up their cards at any of the SBEA stores by calling 526-2111 or 522-2996. **Second shift members please let us know if you would like to pick your card up at the office or lake store.**

KID'S FISHING DAY

Fun For Kids

June 15

9:00 a.m. - 12:00 p.m.



Bring the kids to come out and enjoy the lake and the thrill of catching a fish. We will stock the kid's pond with fish especially for this day. Prizes will be given away that day for the kids. Free hotdog, chips and pop will be provided for participating kids. Concessions will also be available. This is a chance to see what a great facility you have at SBEA. The SBEA lake is located at 4226 S. Gold. Members can save 10% off all kids fishing items after the fishing event. This is a great time to check out our tangle free kid's fishing rods. Meet in front of bait store.

BOWLING NIGHT

Free Cosmic Bowling

July 13, 6:00 p.m. - 9:00 p.m.

SBEA members may bowl free at Seneca Bowling Alley with their current 2023 SBEA membership card (includes shoe rental). You must show your card at the table set up inside the door to bowl free. This event is for you and your immediate family only. You can bowl as long as you want as long as there is no one waiting to play.



HELP WANTED

We currently have 2 employment opportunities at SBEA .

Front gate position – Permanent Part time 2nd shift gate clerk (Wed. - Sun, hours vary on season).



3rd Shift Ranger - part time summer help wanted for the summer seasonal 3rd shift ranger position. The shift will be from 10:00 p.m. - 7:00 a.m. Friday and Saturday nights with some holidays. Requirements for ranger; must be able to lift 80 lbs., have a current drivers license and able to walk up and down stairs.

To apply for either position, please stop by SBEA Administration Office at 4226 S Gold, Mon. - Fri. 8:30 a.m. - 4:00 p.m. to fill out an application.

UPCOMING EVENTS

Designer Bag Bingo - Aug. 3, 4:30 p.m. – 7:00 p.m., 4226 S. Gold St, Enclosed Pavilion. Tickets will be \$25.00 in advance and \$40 at the door, (if tickets are still available), which include admission, appetizers, and 20 game cards (2 per game). Doors will open at 4:00 p.m. and games will begin at 4:30 p.m. Tickets on sale starting in June.



Lunker Catfish Tournament - August 24 - 25. Entry fee is \$25.00 and \$5.00 if you want to enter for the largest catfish caught. Once the fish for this tournament have been stocked on the Aug. 23, there will be no fishing until the tournament starts on Aug. 24 for those entered in the tournament.

Sporting Clay Shoot - Oct. 5, 10:00 a.m. - 1:00 p.m. at Michael Murphy & Sons Sporting Clays Range as we see who the best of the best is. Cost for members is \$35 per shooter if registered by Sept. 20, \$40 per shooter thereafter and for nonmembers. (Includes 50 targets, lunch and a ticket for some great prizes to be given away). Registration forms will be available in April.

Christmas Extravaganza Sale - Nov. 23, 9:00 a.m. - 4:00 p.m. A 1 day sale at the Machinist Union Building, 3830 S Meridian Ave. All payroll deductions done at the sale will be counted as December payroll deductions.

Pizza With Santa - Santa Claus is inviting you to have pizza with him December 7, 11:00 a.m. – 1:00 p.m., SBEA Pavilion. Tickets will be \$3.50 (age 1-12) and \$4.50 (13 & up).

More events to come as details are finalized. Watch your Spirit Boeing Today newsletter and SBEA web page at www.beatoday.com for further information.

HONOR YOUR LOVED ONE

Memorial Pavers Sponsored by Wichita Aerospace Companies

At the corner of Oliver and MacArthur, Spirit has a unique monument that honors individuals who have served our country. Spirit has asked SBEA to start this program up again, so we are honored to relaunch the Aerospace Veteran Memorial Pavers.

You may purchase pavers at any SBEA store in either granite or brick, engraved with either standard messages or personal information honoring veterans. Order forms, including more information about the pavers, are available at all SBEA stores. To order, pick up a form and return the completed form to a SBEA store with your form of pay. Brick pavers are \$35.00 and granite pavers are \$80.00.

STORE NEWS

MARCH NEWS

Winter Clothing Sale
30 % off

Main plant stores only

SERVICES OFFERED TO MEMBERS

SBEA offers many convenient services to make your day easier. Enjoy a variety of amenities such as:

- ♦ Payroll deductions up to \$600.00 a month for active Spirit SBEA members
- ♦ Buying stamps, faxing documents
- ♦ Cashing a personal check up to \$20.00
- ♦ Free Notary services - at the following locations: main store in plant II and administration office located at 4226 S Gold
- ♦ Save 10% off yearly zoo membership
- ♦ Save 10% off hunting, fishing or combo license

Members Offsite SBEA Stores

Did you know SBEA has a store located in the basement of the Meritrust Credit Union on South Oliver? Store hours are Mon. - Fri. 2:00 p.m.– 3:30 p.m. Check us out on your way home from work. Our friendly clerk is always ready to serve you. Spouses, retirees, extended members and family members can also utilize the credit union and lake store to purchase movie tickets, gift cards, SBEA gift certificates, cards for all occasions, gifts and much more. Stop in today and see what all the Meritrust Credit Union SBEA store and SBEA lake store has to offer.



SBEA LAKE NEWS

Winter Hours:

Store Hours:

Wed.- Sun. 7:00 a.m. - 6:00 p.m.

Lake Hours:

Wed.- Sun. 7:00 a.m. - 6:00 p.m.

Spring Hours: April 3

Store Hours:

Wed.- Sun. 7:00 a.m. - 7:30 p.m.

Lake Hours:

Wed.- Sun. 7:00 a.m. - 8:00 p.m.

Lake & Store are both closed on Monday & Tuesday year round except for some holidays.

Last Months Creel Report



Jan./Feb.

Trout 239, Crappie 26
Total 265

TROUT TOURNAMENT

MARCH 16

7:00 a.m. - 5:00 p.m.

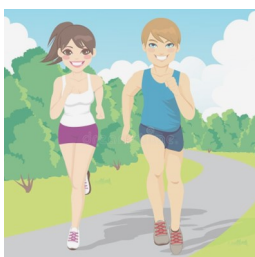
The largest fish caught wins Okuma rod & reel combo. You must be a member and register your catch with the ranger, and fish must be legal size and alive.

15% OFF

Select trout bait

Power bait, salmon eggs, power eggs

As the spring season approaches, the sun's warmth invites us to embrace the outdoors. A leisurely walk around the serene lake sounds like a delightful way to enjoy the changing weather. It's also a great way to clear your mind from the everyday stress. The lake is small enough to make this possible, yet large enough for it to be good exercise. Walking is a simple, natural and great low-impact way to burn calories and help your heart. One trip around the lake is one mile



Notice: Please fill out this form to make sure we have your current information to guarantee your membership cards reaches you at your company mail code. Please send in home address changes to SBEA at K 30-35.

Please help us keep our files current. If your home address has changed, please return this form to SBEA, K30-35. We do not get advised of home address changes or work mail code changes.

Name _____ Employee ID _____

Address _____ City/St/Zip _____

Phone (w) _____ (h) _____ Email _____

M/S _____ Org. _____ Work for Spirit _____ Boeing _____

TICKETS (526-2111)

Some concerts /shows tickets are mobile only so we are unable to sell these tickets. Some shows are subject to being taxed as the show is applying the tax to all tickets. Concerts and shows are subject to change or cancel at any time without notice.

Intrust Bank Arena Events

Disney On Ice: Magic in the Stars

March 21 - 24

See store for times and pricing

Harlem Globetrotters

April 5, 7:00 p.m.

Order tickets by March 27, 1:00 p.m.

Tickets \$35.50 - \$333.50

PBR

April 20, 7:00 p.m.

Order tickets by April 8, 1:00 p.m.

Tickets \$20.25 - \$109.50

Jeff Dunham

April 25, 7:00 p.m.

Order tickets by April 8, 1:00 p.m.

Tickets \$60.25

Century II Events

On Your Feet! The Story of Emilio & Gloria Estefan

March 15 - 17

Order tickets by March 6, 1:00 p.m.

Tickets \$49.25 - \$104.25

See store for times

Bluey's Big Play

March 20 & 21, 6:00 p.m.

Order tickets by March 11, 1:00 p.m.

Tickets \$34.00 - \$134.25

Mean Girls

April 19 - 21

See stores for times

Order tickets by April 8, 1:00 p.m.

Tickets \$54.25 - \$114.25

TICKETS (526-2111)

Hartman Arena Events

Whiskey Myers

May 4, 6:30 p.m.

Tickets \$38.00 - \$103.00

Chicago

May 17, 7:00 p.m.

Tickets \$62.50 - \$132.50

Kansas Star Events

Flogging Molly

March 9, 8:00 p.m.,

Order tickets by March 7, 1:00 p.m.

Tickets \$45.50, \$55.50, \$70.50

Three Dog Night

March 30, 8:00 p.m.

Order tickets by March 26, 1:00 p.m.

Tickets \$45.50, \$55.50, \$70.50

Maddie & Tae

July 19, 8:00 p.m.

Order tickets by July 6, 1:00 p.m.

Tickets See stores for prices

Cotillion Events

Anthony Gomes

March 9, 8:00 p.m., tickets \$22.25

Jackyl

March 22, 8:00 p.m., tickets \$29.75

Rock and Roll Never Forgets A Tribute To Bob Seger

March 23, 7:00 p.m., tickets \$25.25

Cinderella's Tom Keifer

March 29, 8:00 p.m., tickets \$20.25

Chicos de Barrio

March 30, 9:00 p.m., tickets \$60.25

ABBAFAB

April 5, 8:00 p.m., tickets \$33.25 - \$59.25

Voyage - The Ultimate Journey Tribute Band

April 18, 8:00 p.m.

Tickets \$25.25 - \$49.25