

# Spirit / Boeing Today

Volume 39, Issue 4

Web Address: <http://www.beatoday.com> or [www.spirit.beatoday.com](http://www.spirit.beatoday.com)

May 2024

## Contents

Calendar of Events  
Cosmic Bowling Night  
Rock River Rapids Day  
Member Perks ...Inside Page

Lake\Store Hours & News  
Ticket Information  
Creels, Lake News  
Store Sales.....Back Page

**Spirit/Boeing Employees' Association**  
4226 S. Gold Wichita, KS 67217  
(316)522-2996, Fax (316)522-2401  
MC K30-35 – Plant Mail

**SBEA Management Staff**  
Trish Pulliam, Executive Director  
Stephanie Jenkins, Act. Dir./Editor  
Lisa Dunbar, Store Manager  
Jane Sparks, Bookkeeper  
Pat Lewis, Lake Store Supervisor

**Member Information**  
Missy Rosson, 522-2996  
Main Store, Plant II, 526-2111  
Lake Store, 522-5966

**SBEA Board of Directors**  
Board Meeting Attendance

IA EA UA EO LI

D. Burrow Pres.	4
C. McCoy, V. Pres.	4
L. VanDever, Sec.	4
R. Wilson, Tres.	3 1
M. Agnew	4
P. Brown	4
D. Horstman	4
S. Roush	3 1

IA/In attendance, EA/excused absence, UA/un-excused, absence EO/early out, & LI/late in

## LUNKER CATFISH TOURNAMENT

May 18 & 19

**Only those entered in tournament will be allowed to fish. This is a fund raiser for SBEA.**



Your chance to catch the "BIG" one and take 1st place has just gotten better. Grab your fishing poles and don't worry about bait, our lake store can accommodate all your needs for this tournament. Once the fish for this tournament have been stocked in the lake there will be no fishing until the tournament starts at 8 a.m. on May 18. **Only those that have paid to enter the tournament will be allowed to fish until the tournament is over.** This is a 24-hour tournament; registration starts at 7 a.m. on May 18 and the tournament starts at 8 a.m. May 19 weigh in time is at 8 a.m. sharp; however, you may weigh in anytime during the tournament if you do not want to stay the whole time. You may pre-register at the lake store before May 18 or the day of the event. **Pre-register by May 16 to be entered in a drawing for a Zebco 606 Spin Cast rod & reel combo.** The lake will be stocked with "BIG" channel cat for this tournament. There will be 3 cash prizes for the three largest creel of 4 catfish; 1st place, (\$250), 2nd place (\$150) and 3rd place (\$100) and then \$100 if you want to enter the contest for largest catfish caught for an additional \$5.00 entry fee. All rules of the lake must be followed with no gold fish allowed for bait and 2 poles per fisherman. No buddy system will be allowed, you must catch your own fish and they must be kept on your own stringer or in your own basket and kept in the water. Vehicles will be subject to inspection. Contestants will be supplied with an armband and rods used in the tournament will be tagged. Tournament ends promptly at 8 a.m. on May 19. If you do not present your fish by that time, you will be disqualified, so be sure to be on time. For your convenience the bait shop will be open until 10 p.m. and will have hot dog meals for sale on May 18. **The lake will be closed** for fishing to everyone who is not a contestant in the tournament, but members can still come out to the lake store. Camping will be allowed for those in the tournament on May 18.

## KID'S FISHING DAY

Fun For Kids

June 15

9:00 a.m. - 12:00 p.m.

Bring the kids to come out and enjoy the lake and the thrill of catching a fish. We will stock the kid's pond with fish especially for this day. Prizes will be given away that day for the kids. Free hotdog, chips and pop will be provided for participating kids. Concessions will also be available. This is a chance to see what a great facility you have at SBEA. The SBEA lake is located at 4226 S. Gold. Members can save 10% off all kids fishing items after the fishing event. This is a great time to check out our tangle free kid's fishing rods. Meet in front of bait store at 9:00 a.m.



KID'S FISHING DAY

# Calendar of Events

## BOWLING NIGHT

**Free Cosmic Bowling**  
July 13, 6:00 p.m. - 9:00 p.m.

SBEA members may bowl free at Seneca Bowling Alley with their current 2024 SBEA membership card (includes shoe rental). You must show your card at the table set up inside the door to bowl free. This event is for you and your immediate family only. You can bowl as long as you want as long as there is no one waiting to play.



## UPCOMING EVENTS

**Lunker Catfish Tournament** - August 24 - 25. Entry fee is \$25.00 and \$5.00 if you want to enter for the largest catfish caught. Once the fish for this tournament have been stocked on the Aug. 23, there will be no fishing until the tournament starts on Aug. 24 for those entered in the tournament.

**Sporting Clay Shoot** - Oct. 5, 10:00 a.m. - 1:00 p.m. at Michael Murphy & Sons Sporting Clays Range as we see who the best of the best is. Cost for members is \$35 per shooter if registered by Sept. 20, \$40 per shooter thereafter and for nonmembers. (Includes 50 targets, lunch and a ticket for some great prizes to be given away). Registration forms will be available in May.

**Christmas Extravaganza Sale** - Nov. 23, 9:00 a.m. - 4:00 p.m. A 1 day sale at the Machinist Union Building, 3830 S Meridian Ave. **All payroll deductions done at the sale will be counted as December payroll deductions.**

**Pizza With Santa** - Santa Claus is inviting you to have pizza with him December 7, 11:00 a.m. - 1:00 p.m., SBEA Pavilion. Tickets will be \$3.50 (age 1-12) and \$4.50 (13 & up).

**More events to come as details are finalized. Watch your Spirit Boeing Today newsletter and SBEA web page at [www.beatoday.com](http://www.beatoday.com) for further information.**

## WATER PARK DAY

**SBEA Day At Rock River Rapids**  
Saturday, July 27  
1900 E James St, Derby

Join SBEA in a day splashing, soaking, sliding and sunning yourself as you enjoy the lazy river, lap pool, zero-depth pool at Rock River Rapids. Tickets will be sold in advance in all SBEA stores and will only be good for SBEA Rock River Rapids Day on July 27, 2024. Pay \$4.50 for adult and \$4.00 for seniors (60+) & youth (3-17), children under the age of 8 must be accompanied by an adult age 16 or older to enter facility. Tickets on sale in all SBEA stores, Rock River Rapids is open 12:30 p.m. - 7:00 p.m. Regular prices are \$10.00 for adult.



## ARE YOU READY

**DESIGNER PURSE BINGO NIGHT**  
August 3, 4:30 p.m. - 7:00 p.m.  
SBEA Lake Pavilion, 4226 S Gold

Designer Purse Bingo event. Saturday, Aug, 3, 4:30 p.m. - 7:00 p.m. Enjoy a fabulous night for a chance to win name-brand designer purses with 10 games of bingo. Tickets are \$25.00 in advance and \$40 at the door, which include admission, appetizers, and 20 game cards (2 per game). Buy your tickets in advance and be entered into a raffle to be given away at the end of the night. You may purchase 2 additional Bingo cards for each game upon arrival to the SBEA Designer Purse Bingo for \$3.00 per card, limit of 2 cards per game per member. Doors will open at 4:00 p.m. and games will begin at 4:30 p.m. Tickets will go on sale June 5 in all SBEA stores.



- ◆ One winner per game
- ◆ Bring your own adult beverages, if you would like!
- ◆ Must be 12 years old and older to play. Every person, regardless of age, must purchase the \$25/\$40 ticket to enter.
- ◆ Infants and young children are not allowed.
- ◆ 50/50 cash pot will be available during the games and winner selected at the end.
- ◆ Michael Kors, Kate Spade, Coach and other Brands

## E-NEWS LETTER

**ARE YOU ON THE LIST?**



Sign up today and stay tuned in with the latest news, updates and special offers delivered to your inbox. Once a month we will email you your Spirit/Boeing Today Newsletter. You'll be the first to know about new merchant discounts, and special offers and we'll also keep you up to date with social activities, news, happenings and other nifty information. Check out 3 ways we have for you to sign up, 1) visit our website at [www.beatoday.com](http://www.beatoday.com), 2) email Stephanie at [steph@beatoday.com](mailto:steph@beatoday.com), 3) sign up at any SBEA store. For those that want a copy mailed to your home we will be glad to print it and mail it to your home, at a cost of \$10.00 a year.

## 2024 MEMBERSHIP CARDS

**DO YOU HAVE YOUR 2024 MEMBERSHIP CARD YET?**

The 2024 membership cards are at the main store in plant II for you to pick up. Members can request to pick up their cards at any of the SBEA stores by calling 526-2111 or 522-2996. **Second shift members please let us know if you would like to pick your card up at the office or lake store.**



## BEAR WITH US ...

### Bear With Us... Exciting Things Are Happening

We truly appreciate your understanding and patience as we worked this past month to make your lake better. We re-graveled the East and West side roads and repaved the office parking lot and entry road. Please bear with us and thank you for your continued patience as we strive to improve your lake. We do want to remind our members that the speed limit is 10 mph to help us keep the roads looking good for a long time to come.



## LET'S BE FRIENDS

Do you like us? And we mean, like like us? These days, there are so many different ways to stay connected with those we care about. Luckily, at SBEA, we won't make you choose... check us out from 1 of 3 ways, our newsletter, webpage and Facebook page.



We would like to have more members using our Facebook page. So, we are going to have limited supply of gift cards for the next 4 months that will be discounted. We will not advertise in our newsletter or in the stores. You will have to watch Facebook notification to know what cards are on sale. We will see how this goes and if it goes well, we may continue this special buy program for our members. Cards are limited, so limited 2 per member until they are gone. No special orders it will be cards that we can get discounted to purchase.

## HELP WANTED

We currently are looking to fill a permanent part time sales clerk for SBEA. The hours will vary depending on seasons. Some benefits available.

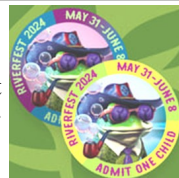
Please stop into SBEA office, Mon. – Fri., 8:30 a.m. – 3:30 p.m. to fill out an application. 4226 S Gold, Wichita, Ks 67217.



## RIVERFEST BUTTONS

### YES WE HAVE WICHITA RIVERFEST BUTTONS!

Riverfest is May 31 - June 8, the buttons are \$19.00 (reg. \$20.00) adult members, \$9.50 (\$10.00) kid's. See SBEA stores for availability. Buttons will be available beginning May 6, while supplies last.



## FIRE PIT INFO

### Camping Season is Just Around The Corner May 24 - September 2

Camping season is just about here and that means camping by the fire. The lake store will have fire pits available to rent during May 24 - September 2. There are several requirements. No fires will be allowed until you check with the ranger for full details. You cannot set up a fire pit unless approved by the rangers. Cost per day will be \$20.00 deposit, \$5.00 rental with your own firewood or free rental if you purchase firewood from SBEA. Please check in with the lake store for a list of fire pit rules and application to sign. Absolutely no fire pits will be accepted on the docks or picnic areas at any time.



## STORE NEWS

### MAY NEWS

10% Off

### Mother Day Merchandise (See store for details) Main plant stores only

**Mother's Day:** We have your gifts for Mothers Day, May 12, all picked out for you. New shipments just arrived! They will be available for purchase starting May 1st.

- \* Perfume Gift Sets
- \* Jewelry
- \* Dooney & Burke
- \* Michael Kors
- \* Coach
- \* Kate Spade

**Holiday & Special Occasions:** May can be a busy month full of graduations, birthdays, Mother's Day and Memorial Day. SBEA stores will be happy to assist you with gifts for any of these occasions. Don't forget we also sell gift cards and gift certificates.

## PLANNING A TRIP?

School is just about out and workloads are lighter for some, making summer a prime season for family travel. A vacation can give you that much needed time to catch up in person! Check with SBEA for all your traveling needs with lodging, entertainment and dining out. Simply stop in your nearest SBEA store for information and member codes to the following vendors below. Be sure to check out our merchant discount list for all your traveling needs.

- ◆ Ticketsatwork
- ◆ Perks Connect
- ◆ Great Wolf Lodge
- ◆ V. J.'s Exotic Safaris
- ◆ Silver Dollar City
- ◆ More



LET'S GO TRAVEL

## SBEA LAKE NEWS

### Summer Hours: May 1

#### Store Hours:

Wed.- Sun. 7:00 a.m. - 9:30 p.m.

#### Lake Hours:

Wed.- Sun. 7:00 a.m. - 10:00 p.m.

Lake & Store are both closed on Monday & Tuesday year round except for some holidays.

### Overnight Camping: May 25

Lake Hours are open Fri. 7:00 a.m. until Sun. 10:00 p.m.

### Memorial Day Lake Hours:

The lake will open on May 24 at 7:00 a.m. and stay open until 10:00 p.m. on Monday May 27.

## CATFISH TOURNAMENT

**MAY 25**

**7:00 a.m. - 5:00 p.m.**

The largest catfish caught wins Lit'l Hustler Kit. You must be a member and register your catch with the ranger, and fish must be legal size and alive.

## Last Months Creel Report

**April**

Trout 121, Crappie 22, Bass 6  
Bluegill 18, Catfish 9  
Total 176

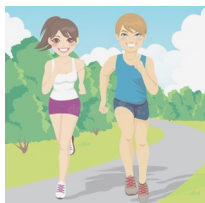


**15% OFF**

Select trout bait  
Power bait, salmon eggs,  
power eggs



As the spring season approaches, the sun's warmth invites us to embrace the outdoors. A leisurely walk around the serene lake sounds like a delightful way to enjoy the changing weather. It's also a great way to clear your mind from the everyday stress. The lake is small enough to make this possible, yet large enough for it to be good exercise. Walking is a simple, natural and great low-impact way to burn calories and help your heart. One trip around the lake is one mile.



**Notice: Please fill out this form to make sure we have your current information to guarantee your membership cards reaches you at your company mail code. Please send in home address changes to SBEA at K 30-35.**

Please help us keep our files current. If your home address has changed, please return this form to SBEA, K30-35. We do not get advised of home address changes or work mail code changes.

Name \_\_\_\_\_ Employee ID \_\_\_\_\_

Address \_\_\_\_\_ City/St/Zip \_\_\_\_\_

Phone (w) \_\_\_\_\_ (h) \_\_\_\_\_ Email \_\_\_\_\_

M/S \_\_\_\_\_ Org. \_\_\_\_\_ Work for Spirit \_\_\_\_\_ Boeing \_\_\_\_\_

## TICKETS (526-2111)

Due to the number of concerts, tours and events coming to Wichita, we are unable to list all of the them in the newsletter. Please visit SBEA website at [SBEA Events - Spirit / Boeing Employees' Association \(beatoday.com\)](http://SBEA Events - Spirit / Boeing Employees' Association (beatoday.com)) or one of the SBEA stores for more concerts and upcoming attractions. Concerts and shows are subject to change or cancel at any time without notice.

### Intrust Bank Arena Events

#### Hot Wheels Monster Trucks

#### Live Glow Party

July 13 - 14

Order tickets by July 1, 1:00 p.m.

Tickets See stores for prices

#### Bulls, Bands and Barrels

#### Featuring Koe Wetzel

Aug. 17, 7:00 p.m.

Order tickets by Aug. 2, 1:00 p.m.

Tickets \$42.50 - \$166.25

#### Heart

Nov. 16, 8:00 p.m.

Order tickets by Nov. 1, 1:00 p.m.

Tickets \$35.50 - \$125.50

### Kansas Star Events

#### Maddie & Tae

July 19, 8:00 p.m.

Order tickets by July 6, 1:00 p.m.

Tickets \$15.50 - \$50.50

#### Gabby Barrett

July 25, 8:00 p.m.

Order tickets by July 6, 1:00 p.m.

Tickets \$40.50 - \$65.50



## TICKETS (526-2111)

### Hartman Arena Events

#### Chicago

May 17, 7:00 p.m.

Tickets \$62.50 - \$132.50

#### I Prevail & Halestorm

August 6, 6:00 p.m.

Tickets \$48.50 - \$65.50

#### Alice Cooper

Aug. 11, 8:00 p.m.

Tickets \$42.50 - \$92.50

#### Dwight Yoakam

Aug. 22, 7:00 p.m.

Tickets \$49.50 - \$149.50

#### Kansas

Oct. 5, 7:30 p.m.

Tickets \$49.50 - \$128.50

#### Joe Bonamassa

Nov. 19, 8:00 p.m.

Tickets \$52.50 - \$182.50

### Cotillion Events

#### Josh Turner

May 9, 8:00 p.m.

Tickets \$39.25 - \$99.25

#### Damage Inc. (Metallica Tribute)

May 10, 7:00 p.m., tickets \$25.25

#### Get the Led Out

May 11, 8:00 p.m.

Tickets \$29.75 - \$59.75

#### George Thorogood & The Destroyers

May 12, 7:30 p.m.

Tickets \$46.25 - \$141.25

#### From Ashes to New

June 2, 6:00 p.m., tickets \$30.25

#### Lyle Lovett and His Large Band

June 26, 8:00 p.m.

Tickets \$49.00 - \$139.25