

# Spirit / Boeing Today

Volume 40, Issue 2

Web Address: <http://www.beatoday.com> or [www.spirit.beatoday.com](http://www.spirit.beatoday.com)

March 2025

## Contents

Calendar of Events  
Kids Fishing Day  
Lunker Catfish Tournament  
Member Perks ...Inside Page

Lake\Store Hours & News  
Ticket Information  
Creels, Lake News  
Store Sales.....Back Page

## Spirit/Boeing Employees' Association

4226 S. Gold Wichita, KS 67217  
(316)522-2996, Fax (316)522-2401  
MC K30-35 – Plant Mail

## SBEA Management Staff

Trish Pulliam, Executive Director  
Stephanie Jenkins, Act. Dir./Editor  
Lisa Dunbar, Store Manager  
Jane Sparks, Bookkeeper  
Pat Lewis, Lake Store Supervisor

## Member Information

Missy Rosson, 522-2996  
Main Store, Plant II, 526-2111  
Lake Store, 522-5966

## SBEA Board of Directors

Board Meeting Attendance

IA EA UA EO LI

D. Burrow Pres.	2	
L. VanDever, V. Pres.	2	
R. Wilson, Sec.	2	
C. McCoy, Tres.	2	
M. Agnew	2	
P. Brown	1	1
D. Horstman	2	
S. Roush	2	

IA/In attendance, EA/excused absence, UA/un-excused, absence EO/early out, & LI/late in

## Paint, Sip Wine & Have Fun

**Paint Your Art Out Night**  
**SBEA Lake Enclosed Pavilion**  
**April 11, 6:00 p.m. - 9:00 p.m.**  
**Tickets \$30.00**



Are you ready to discover your inner artist? Artist Marcine Goodrum is back to guide us through a night of painting and fun. At the end of the evening, you will have a spring picture to take home and display. Bring your favorite beverage. We will provide the canvas, paint supplies, and snacks. Tickets are available at all SBEA stores. Hurry, only 20 tickets will be sold.

## Look Who's Hopping Into Town

**SBEA Annual Easter Celebration**  
**April 19, 11:00 a.m. - 2:30 p.m.**  
**SBEA Recreation Area, 4226 S. Gold**

- 11:00 a.m. - 2:00 p.m. Games
- 11:00 a.m. - 2:00 p.m. Pictures w/ Easter Bunny
- 11:00 a.m. - 2:00 p.m. Troubles The Clown
- 11:00 a.m. - 2:00 p.m. Face Painting
- 11:00 a.m. - 2:00 p.m. Character Artist (TBD)
- 11:00 a.m. - 2:00 p.m. 24' Obstacle Course
- 11:00 a.m. - 2:00 p.m. Decorate Cookies
- 11:00 a.m. - 2:00 p.m. Midway Games
- 11:00 a.m. - 2:00 p.m. Crafts
- 11:00 a.m. - 2:00 p.m. Animal Rescue
- 11:00 a.m. - 2:00 p.m. Mickey Park Moonbounce
- 11:00 a.m. - 2:00 p.m. 10' Slide
- 11:00 a.m. - 2:00 p.m. Fun Express
- 11:00 a.m. - 2:00 p.m. Tic Tac Toe/ Four Across
- 11:00 a.m. - 2:00 p.m. Kid's Zone
- 11:00 a.m. - 2:00 p.m. Concession Stand
- 2:15 p.m. - Candy run with Prizes (Ages 2-4, 5-7, 8-10, 11-12)



**Membership cards checked at gate**

Plan on spending April 19 at the SBEA Recreation Area for lots of fun events; Troubles the Clown, crafts, Easter Bunny and more. Photos with the Easter Bunny will be available for \$3.00 or \$1.00 with your camera. The candy run will take place at 2:15 p.m. Some of the candy will be marked for special prizes. We will have concessions available to purchase food and drinks.

**We NEED volunteers** to help make this a fun and safe event for the kids. Please contact Stephanie at 522-2996 to join in the fun.

# Calendar of Events

## EASTER VOLUNTEERS WANTED

SBEA's Annual Easter Celebration is one of our members favorite activities every year. Activities include: games, crafts, jelly bean guess, lollipop tree, inflatables, decorate your own cookie, spin-art, pucker powder, concession stand and more. In order for this event (and other events throughout the year) to run smoothly, we rely on volunteers to help us make this happen. Did you know that volunteering and helping others can help you reduce stress, combat depression, keep you mentally stimulated, and provide a sense of purpose? Help us make this a fun and safe event for the kids by volunteering. Please contact Stephanie at 522-2996. Instant recognition given the day you volunteer.



## A BIG THANK YOU

SBEA would like to give a BIG THANK YOU to Burgandy Haskin and family for their donation of stuffed animals for the Easter Celebration. It takes quite a few stuffed animals to supply the Animal Rescue game and for prizes for the candy run. You have no idea how much your contribution means to us. Thank you so much you are amazing! Thank you so very much from all of us at SBEA!



## LUNKER CATFISH TOURNAMENT

May 17 & 18

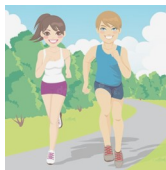
**Only those entered in tournament will be allowed to fish. This is a fund raiser for SBEA.**

Your chance to catch the "BIG" one and take 1st place has just gotten better. Grab your fishing poles and don't worry about bait, our lake store can accommodate all your needs for this tournament. Once the fish for this tournament have been stocked in the lake there will be no fishing until the tournament starts at 8 a.m. on May 17. **Only those that have paid to enter the tournament will be allowed to fish until the tournament is over.** This is a 24-hour tournament; registration starts at 7 a.m. on May 18 and the tournament starts at 8 a.m. May 18 weigh in time is at 8 a.m. sharp; however, you may weigh in anytime during the tournament if you do not want to stay the whole time. You may pre-register at the lake store before May 17 or the day of the event. **Pre-register by May 15 to be entered in a drawing for a Hi-Tech Fishing Water 24x26 Basket.** The lake will be stocked with "BIG" channel cat for this tournament. There will be 3 cash prizes for the three largest creel of 4 catfish; 1st place, (\$250), 2nd place (\$150) and 3rd place (\$100) and then \$100 if you want to enter the contest for largest catfish caught for an additional \$5.00 entry fee. All rules of the lake must be followed with no gold fish allowed for bait and 2 poles per fisherman. No buddy system will be allowed, you must catch your own fish and they must be kept on your own stringer or in your own basket and kept in the water. Vehicles will be subject to inspection. Contestants will be supplied with an armband and rods used in the tournament will be tagged. Tournament ends promptly at 8 a.m. on May 18. If you do not present your fish by that time, you will be disqualified, so be sure to be on time. For your convenience the bait shop will be open until 10 p.m. and will have hot dog meals for sale on May 17. **The lake will be closed** for fishing to everyone who is not a contestant in the tournament, but members can still come out to the lake store. Camping will be allowed for those in the tournament on May 17.

## Stroll Around The Lake

**Not Much Is Cheaper Or More Relaxing Than Taking A Walk Outside.**

As the spring season approaches, the sun's warmth invites us to embrace the outdoors. A leisurely walk around the serene lake sounds like a delightful way to enjoy the changing weather. It's also a great way to clear your mind from the everyday stress. The lake is small enough to make this possible, yet large enough for it to be good exercise. Walking is a simple, natural and great low-impact way to burn calories and help your heart. One trip around the lake is one mile



## KID'S FISHING DAY

Fun For Kids  
June 14

9:00 a.m. - 12:00 p.m.



Bring the kids to come out and enjoy the lake and the thrill of catching a fish. We will stock the kid's pond with fish especially for this day. Prizes will be given away that day for the kids. Free hotdog, chips and pop will be provided for participating kids. Concessions will also be available. This is a chance to see what a great facility you have at SBEA. The SBEA lake is located at 4226 S. Gold. Members can save 10% off all kids fishing items after the fishing event. This is a great time to check out our tangle free kid's fishing rods. Meet in front of bait store.

## BOWLING NIGHT

Free Cosmic Bowling  
May 10, 6:00 p.m. - 9:00 p.m.

SBEA members may bowl free at Seneca Bowling Alley with their current 2023 SBEA membership card (includes shoe rental). You must show your card at the table set up inside the door to bowl free. This event is for you and your immediate family only. You can bowl as long as you want as long as there is no one waiting to play.



## PAYROLL POLICY

### SBEA Payroll Deduction Policy

Due to continual problems with payroll deductions, these are the 2 we are having the most problems with. Please visit [SBEA Payroll Deduction and Probation / Reinstatement Fees - Spirit / Boeing Employees' Association](#) for a full list of our pay roll deductions policy.

- \* Members can only do 2 payroll deductions per month, limit of \$600 per month.
- \* Violators of payroll deduction rules will receive a letter from SBEA stating the violation and will be placed on probation for payroll deducts for 1 year. During that year a second violation the member will be suspended from doing payroll deducts for 90 days. A third violation the member will be suspended from doing payroll deductions for 6 months.
- \* If for any reason we cannot collect what is owed to SBEA when a payroll deduction is submitted, you will be suspended from doing further deductions until debt is paid in full. If this problem continues your privileges will be reviewed for suspension or payroll deduction privileges will be revoked.
- \* If your payroll deduction is sent to collections, you will lose the privilege of doing payroll deductions permanently and your membership is suspended until the debt is paid.

## 3RD SHIFT RANGER NEEDED

### Seasonal Part time Ranger

3<sup>rd</sup> Shift Ranger - part time summer help wanted for the summer seasonal 3rd shift ranger position. The shift will be from 10:00 p.m. - 7:00 a.m. Friday and Saturday nights with some holidays. Requirements for ranger; must be able to lift 80 lbs., have a current drivers license and able to walk up and down stairs.



To apply for either position, please stop by SBEA Administration Office at 4226 S Gold, Mon. - Fri. 8:30 a.m. - 4:00 p.m. to fill out an application.

## UPCOMING EVENTS

**Designer Bag Bingo** - Aug. 8, 4:30 p.m. – 7:00 p.m., 4226 S. Gold St, Enclosed Pavilion. Tickets will be \$25.00 in advance and \$40 at the door, (if tickets are still available), which include admission, appetizers, and 20 game cards (2 per game). Doors will open at 4:00 p.m. and games will begin at 4:30 p.m. Tickets on sale starting in June.

**Lunker Catfish Tournament** - August 23 - 24. Entry fee is \$25.00 and \$5.00 if you want to enter for the largest catfish caught. Once the fish for this tournament have been stocked on Aug. 22, there will be no fishing until the tournament ends on Aug. 24 for those entered in the tournament.

**Sporting Clay Shoot** - Sept. 27, 10:00 a.m. - 1:00 p.m. at Michael Murphy & Sons Sporting Clays Range as we see who the best of the best is. Cost for members is \$35 per shooter if registered by Sept. 20, \$40 per shooter thereafter and for nonmembers. (Includes 50 targets, lunch and a ticket for some great prizes to be given away). Registration forms will be available now.

**Christmas Extravaganza Sale** - Nov. 22, 9:00 a.m. - 4:00 p.m. A 1 day sale at the Machinist Union Building, 3830 S Meridian Ave.

**Pizza With Santa** - Santa Claus is inviting you to have pizza with him December 6, 11:00 a.m. – 1:00 p.m., SBEA Pavilion. Tickets will be \$3.50 (age 1-12) and \$4.50 (13 & up) and go on sale in October.

**More events to come as details are finalized. Watch your Spirit Boeing Today newsletter and SBEA web page at [www.beatoday.com](http://www.beatoday.com) for further information.**

## STORE NEWS

### MARCH NEWS

**10% off**

**Easter Merchandise  
Main plant stores only**

### SERVICES OFFERED TO MEMBERS

SBEA offers many convenient services to make your day easier. Enjoy a variety of amenities such as:

- ◆ Payroll deductions up to \$600.00 a month for active Spirit SBEA members
- ◆ Buying stamps, faxing documents
- ◆ Cashing a personal check up to \$20.00
- ◆ Free Notary services - at the following locations: main store in plant II and administration office located at 4226 S Gold
- ◆ Save 10% off yearly zoo membership
- ◆ Save 10% off hunting, fishing or combo license

### Do You Have Your 2025 Membership Card Yet?

The 2025 membership cards are at the main store in plant II for you to pick up. Members can request to pick up their cards at any of the SBEA stores by calling 526-2111 or 522-2996. **Second shift members please let us know if you would like to pick your card up at the office or lake store.**

### Administrative Professionals Day APRIL 26



Administrative Professionals work hard for you on a daily basis, so don't forget to give them a little something to show your appreciation. Fresh flowers, gift cards, garden figurines, etc., all make wonderful gift ideas. Stop by your nearest SBEA store for all your gift ideas and greeting cards to help make your Administrative Professionals Day a great day.

## SBEA LAKE NEWS

### Winter Hours:

#### Store Hours:

Wed.- Sun. 7:00 a.m. - 6:00 p.m.

#### Lake Hours:

Wed.- Sun. 7:00 a.m. - 6:00 p.m.

### Spring Hours: April 2

#### Store Hours:

Wed.- Sun. 7:00 a.m. - 7:30 p.m.

#### Lake Hours:

Wed.- Sun. 7:00 a.m. - 8:00 p.m.

Lake & Store are both closed on Monday & Tuesday year round except for some holidays.

## Last Months Creel Report

### Jan./Feb.

Trout 239, Crappie 26  
Total 265



## TROUT TOURNAMENT

**MARCH 15**

**7:00 a.m. - 5:00 p.m.**

### Last Trout Contest of the Season

The largest trout caught wins Shakespeare Crusader Spinning Combo. You must be a member and register your catch with the ranger, and fish must be legal size and alive.

## NEW YEAR'S CLEAN UP RED TAG SALE

**Inventory red tag sale:** Check out the red tag sale going on at the lake store's on house wares, toys, jewelry, sunglasses and more.

## TICKETS (526-2111)

Due to the amount of concerts, tours and events coming to Wichita, we are unable to list all of the upcoming events in the newsletter. Please visit your SBEA website at [www.beatoday.com](http://www.beatoday.com) or SBEA stores for more concerts and upcoming attractions.

### Park City Arena Events

#### Alison Krauss & Union Station

June 16, 7:30 p.m.

Tickets \$62.50 - \$152.50

**Notice: Please fill out this form to make sure we have your current information to guarantee your membership cards reaches you at your company mail code. Please send in home address changes to SBEA at K 30-35.**

Please help us keep our files current. If your home address has changed, please return this form to SBEA, K30-35. We do not get advised of home address changes or work mail code changes.

Name \_\_\_\_\_ Employee ID \_\_\_\_\_

Address \_\_\_\_\_ City/St/Zip \_\_\_\_\_

Phone (w) \_\_\_\_\_ (h) \_\_\_\_\_ Email \_\_\_\_\_

M/S \_\_\_\_\_ Org. \_\_\_\_\_ Work for Spirit \_\_\_\_\_ Boeing \_\_\_\_\_

## TICKETS (526-2111)

Some concerts /shows tickets are mobile only so we are unable to sell these tickets. Some shows are subject to being taxed as the show is applying the tax to all tickets. Concerts and shows are subject to change or cancel at any time without notice.

### Intrust Bank Arena Events

#### Dancing With The Stars: Live!

March 15, 7:30 p.m.

Order tickets by March 3, 1:00 p.m.

Tickets: \$60.00 - \$125.50

#### Harlem Globetrotters

March 30, 3:00 p.m.

Order tickets by March 25, 1:00 p.m.

Tickets \$33.50 - \$118.50

#### Kid Rock

April 18, 7:30 p.m.

Order tickets by April 5, 1:00 p.m.

Seats are limited

Tickets \$79.50 - \$229.50

#### Alabama

April 27, 7:00 p.m.

Order tickets by April 11, 1:00 p.m.

Tickets \$30.50 - \$135.25

#### Dude Perfect

Hero World Tour

July 11, 7:00 p.m.

Order tickets by June 27, 1:00 p.m.

Tickets: \$34.25 - \$154.25

#### Creed

July 29, 7:00 p.m.

Order tickets by July 14, 1:00 p.m.

Tickets \$40.00 - \$225.50

#### Nate Bargatze

Sept. 14, 7:00 p.m.

Order tickets by Sept. 1, 1:00 p.m.

Tickets \$44.25 - \$104.25

Aisle Seats are \$10.00 more

## TICKETS (526-2111)

### Century II Events

#### Bonnie Raitt

March 19, 7:30 p.m.

Order tickets by March 5, 1:00 p.m.

Tickets \$49.50 - \$79.50

#### Beetlejuice

April 2 - April 6

Order tickets by March 14, 1:00 p.m.

See stores for times

Tickets \$59.50 - \$129.50

#### Golden Girls: the Laughs Continue

April 13, 3:00 p.m.

Order tickets by March 31, 1:00 p.m.

Tickets \$42.43 - \$111.23

### Cotillion Events

#### Inside: A Tribute to Tom Petty

March 1, 8:00 p.m., tickets \$17.50

#### Bob Wills Texas Playboys

March 7, 8 p.m., tickets \$32.50

#### Keb Mo & Shawn Colvin

Mar 16, 6:30 p.m.

Tickets: \$49.25 to \$119.25

#### Warrant

March 28, 8:00 p.m.

Tickets \$40.00 - \$99.50

#### Ace Frechley

March 29, 8:00 p.m.

Tickets \$30.00 - \$80.00

#### Jim Henson's Labyrinth: In Concert

Apr 13, 8:00 p.m.

Tickets: \$29.75 to \$125.25

#### Soulja Boy

April 19, 8:00 p.m., tickets \$29.75

#### Asking Alexandria with From Ashes to New

April 27, 8:00 p.m.

Tickets \$35.50 - \$75.50